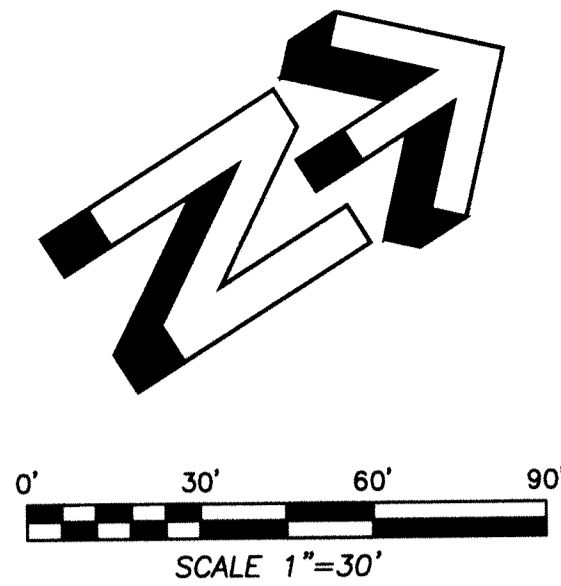


Bink's Commercial Centre Replat of Lot 4 & Lot 1A

14

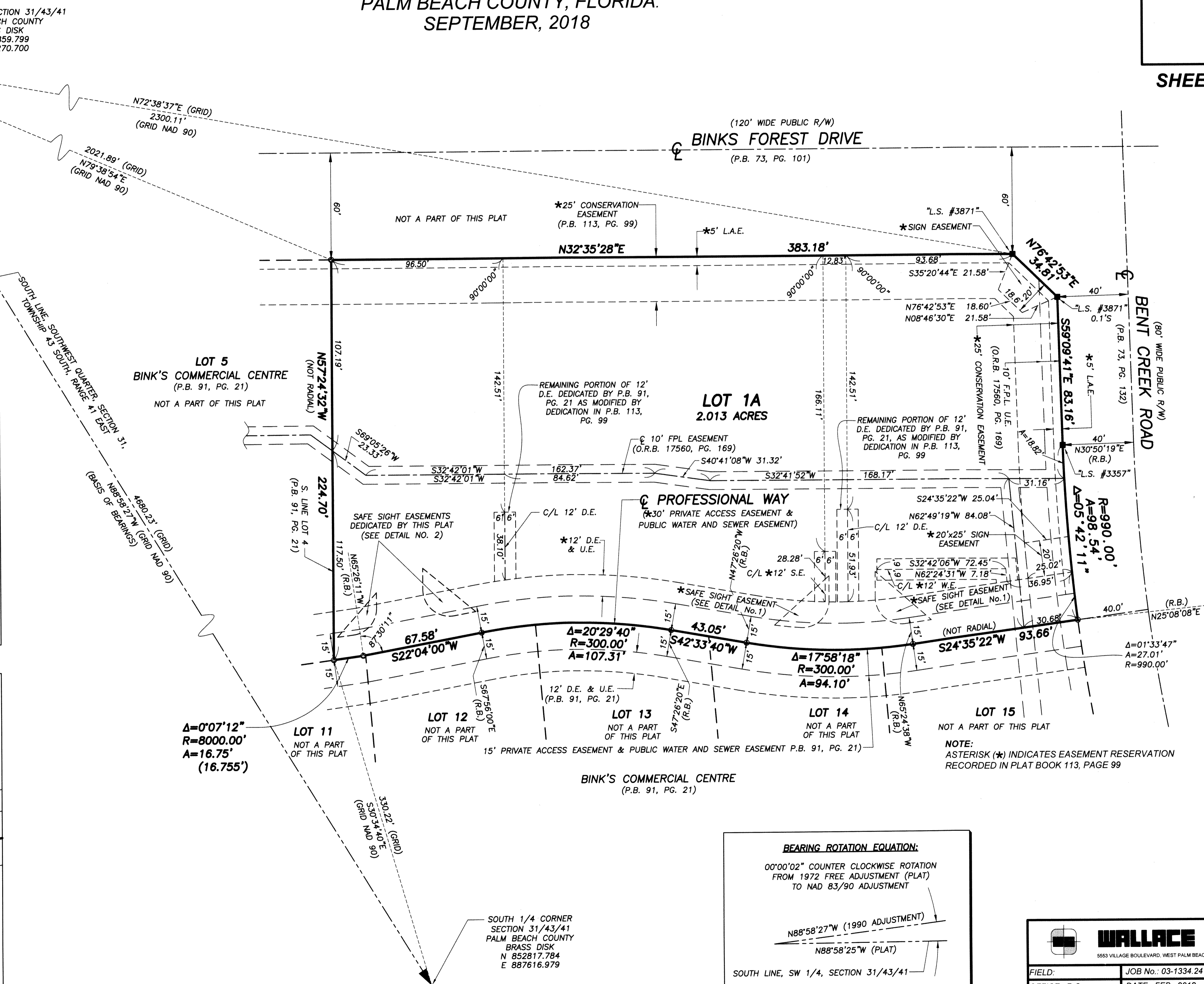
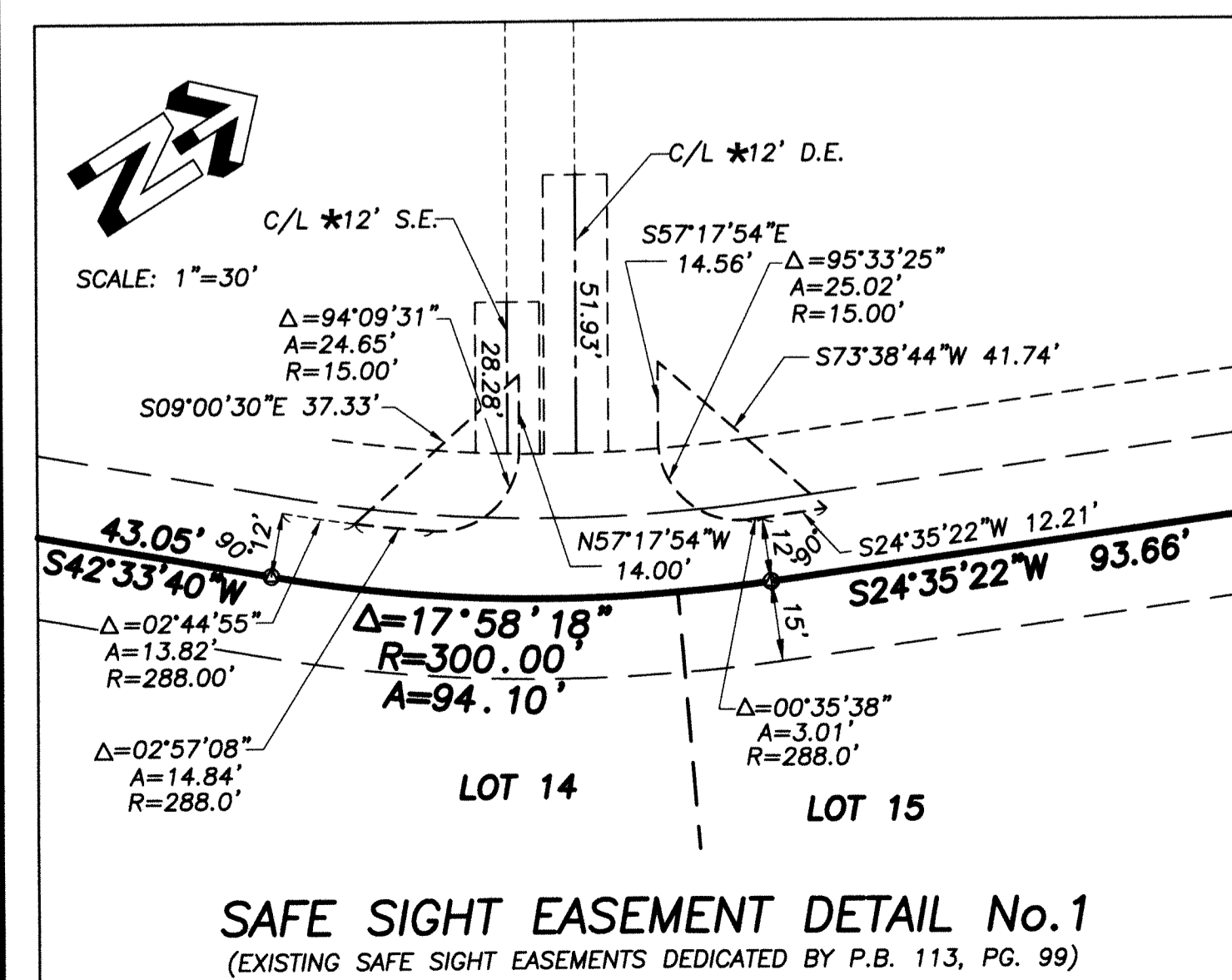
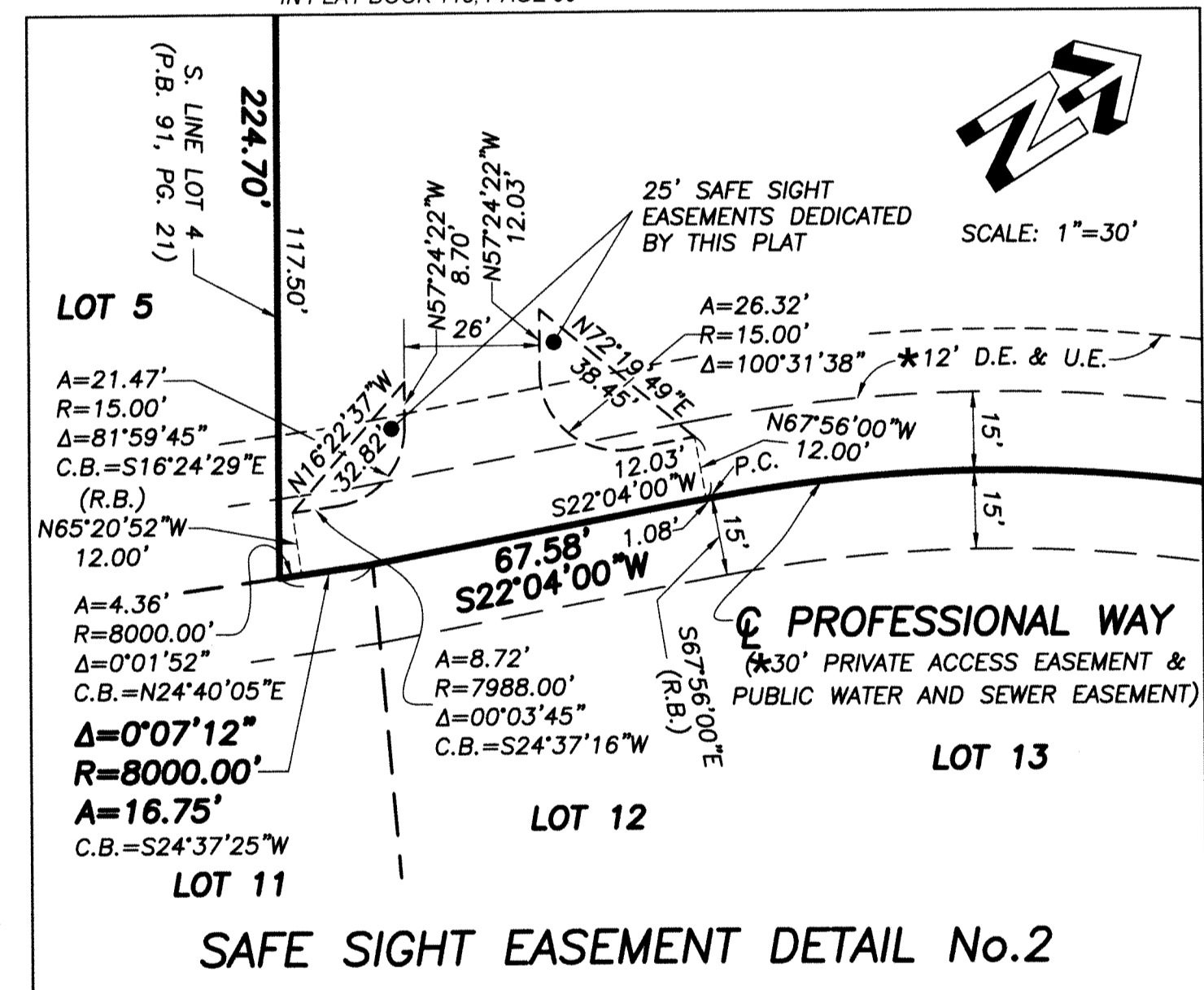
BEING A REPLAT OF LOT 4, BINK'S COMMERCIAL CENTRE, ACCORDING TO THE PLAT THEREOF, AS RECORDED IN PLAT BOOK 91, PAGES 21 & 22, AND A REPLAT OF LOT 1A, BINK'S COMMERCIAL CENTRE REPLAT OF LOTS 1, 2 & 3, ACCORDING TO THE PLAT THEREOF, AS RECORDED IN PLAT BOOK 113, PAGES 99 THROUGH 101, BOTH OF THE PUBLIC RECORDS OF PALM BEACH COUNTY, FLORIDA, LYING IN SECTION 31, TOWNSHIP 43 SOUTH, RANGE 41 EAST, VILLAGE OF WELLINGTON, PALM BEACH COUNTY, FLORIDA.
SEPTEMBER, 2018

SHEET 3 OF 3



ABBREVIATIONS & SYMBOLS:

1. ■ = FOUND 4" X 4" CONCRETE PERMANENT REFERENCE MONUMENT (P.R.M.) WITH DISK STAMPED AS LABELED
2. ⊙ = FOUND MAG NAIL WITH DISK STAMPED "P.R.M. LS #3357"
3. ⊙ = SET MAG NAIL WITH DISK STAMPED "P.R.M. LB #4569"
4. C/L, C = CENTERLINE
5. D.E. = DRAINAGE EASEMENT
6. L.A.E. = LIMITED ACCESS EASEMENT
7. O.R.B. = OFFICIAL RECORDS BOOK
8. P.B. = PLAT BOOK
9. PG. = PAGE
10. R.B. = RADIAL BEARING
11. S.E. = SEWER EASEMENT
12. U.E. = UTILITY EASEMENT
13. W.E. = WATER EASEMENT
14. * = DENOTES EASEMENT RESERVATION RECORDED IN PLAT BOOK 113, PAGE 99



BEARING ROTATION EQUATION:
00°00'02" COUNTER CLOCKWISE ROTATION FROM 1972 FREE ADJUSTMENT (PLAT) TO NAD 83/90 ADJUSTMENT

$N88^{\circ}58'27''W$ (1990 ADJUSTMENT)
 $N88^{\circ}58'25''W$ (PLAT)

SOUTH LINE, SW 1/4, SECTION 31/43/41

| | | |
|---|---------------------|----------------------|
| WALLACE SURVEYING CORP. LICENSED BUSINESS # 4569 5553 VILLAGE BOULEVARD, WEST PALM BEACH, FLORIDA 33407 • (561) 640-4551 | | |
| FIELD: | JOB No.: 03-1334.24 | F.B. PG. |
| OFFICE: R.C. | DATE: FEB., 2018 | DWG. No.: 03-1334-12 |
| C/K'D: R.C. | REF.: 03-1334-2.DWG | SHEET 3 OF 3 |